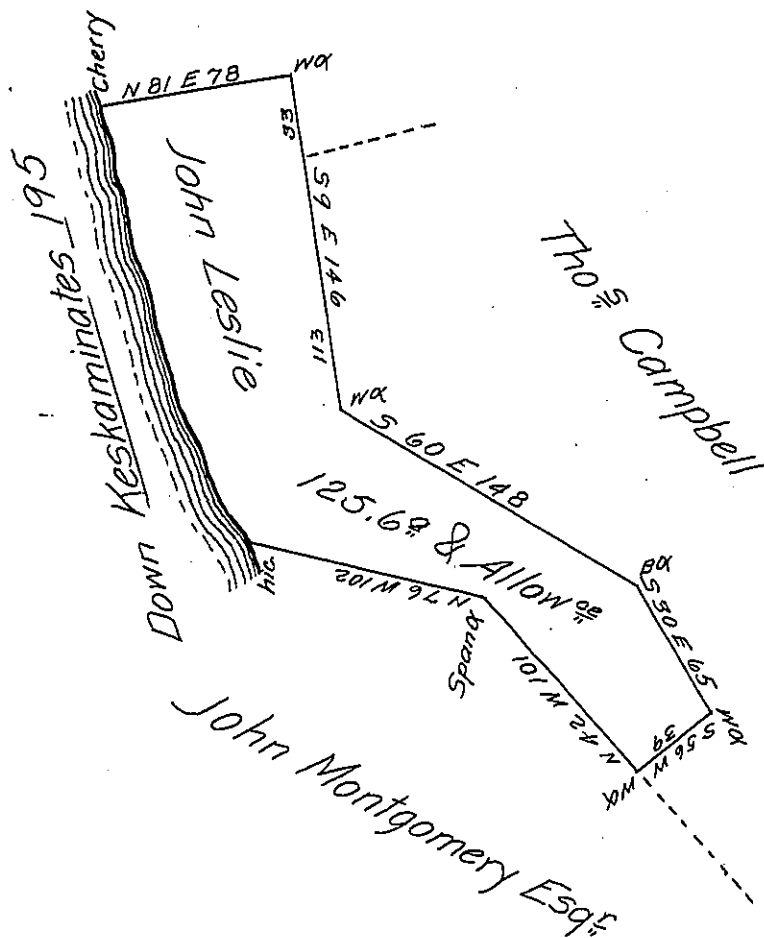


John Montgomery Esq^r



Survey'd to John Leslie on the 10th day of June 1776 the above described Tract of one hundred & twenty five acres & allowance of six P Cent. Situate on the North side of Kiskaminatis adjoining land of John Montgomery Esq^r & Thomas Campbell, Including his Cabbin in Westmoreland County By warrant of the 22^d day of Feby 1776.

Joshua Elder D.S.

John Lukens Esq^r S Gen!

Now in Conemagh Township Indiana County

IN TESTIMONY that the above is a copy of the original remaining on file in the Department of Internal Affairs of Pennsylvania, made conformably to an Act of Assembly approved the 16th day of February, 1833, I have hereunto set my Hand and caused the Seal of said Department to be affixed at Harrisburg, this third day of October 1905

Isaac R. Brown
Secretary of Internal Affairs.